



ACTIVE USG HUMANITARIAN PROGRAMS FOR THE EBOLA OUTBREAK RESPONSE IN THE DEMOCRATIC REPUBLIC OF THE CONGO

Last Updated 07/29/19

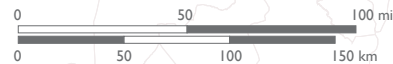
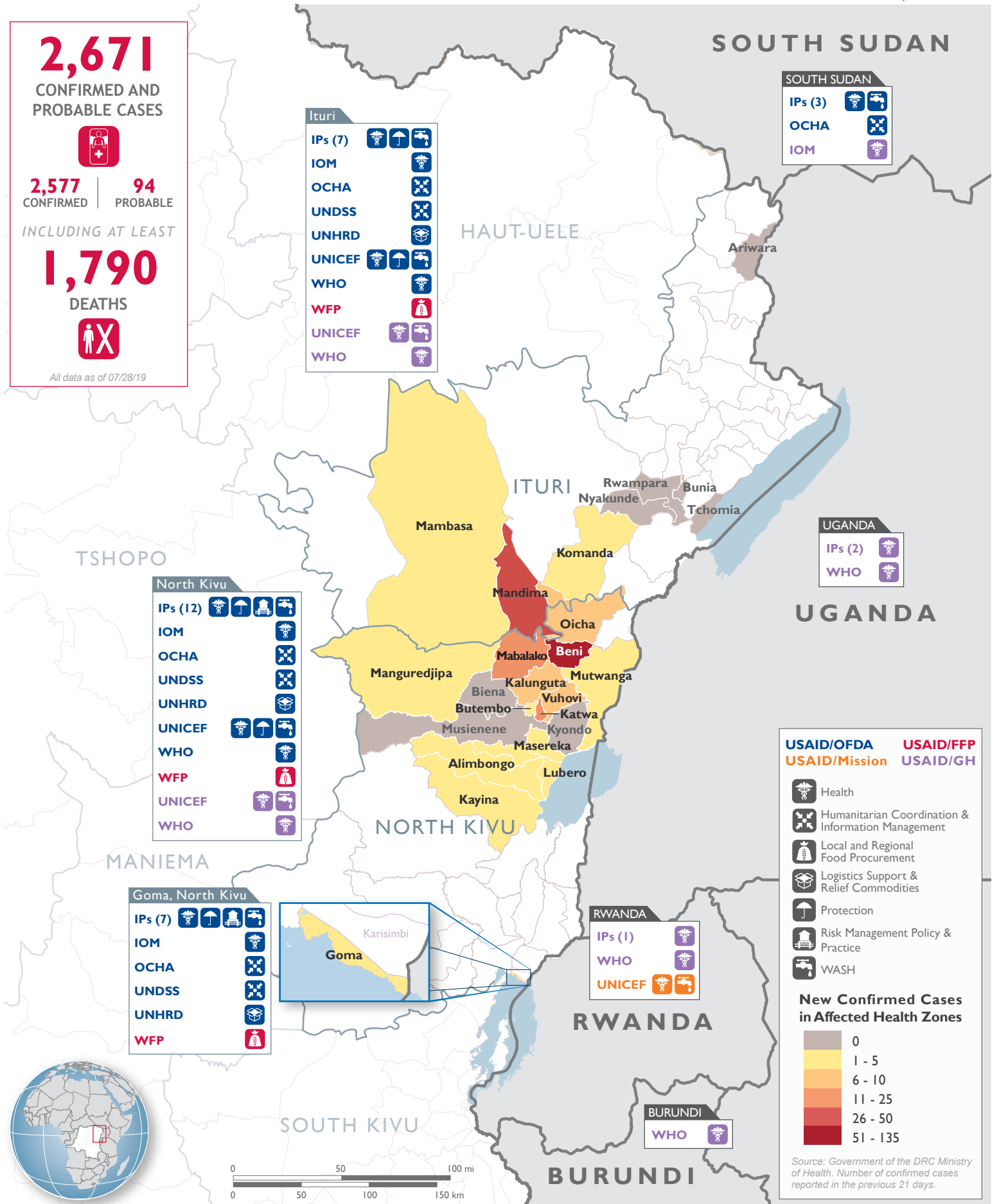
2,671
CONFIRMED AND PROBABLE CASES

 **2,577** CONFIRMED | **94** PROBABLE

INCLUDING AT LEAST **1,790** DEATHS



All data as of 07/28/19



The boundaries and names used on this map do not imply official endorsement or acceptance by the U.S. Government.

Source: Government of the DRC Ministry of Health. Number of confirmed cases reported in the previous 21 days.