


## ESTIMATED FOOD SECURITY LEVELS

- No Acute Food Insecurity
- Moderate Food Insecurity
- High Food Insecurity
- Extreme Food Insecurity
- Famine

Source: FEWS NET FOOD SECURITY OUTLOOK, JUNE - SEPTEMBER 2016

 Refugee Camp

Source: UNHCR, February 2016

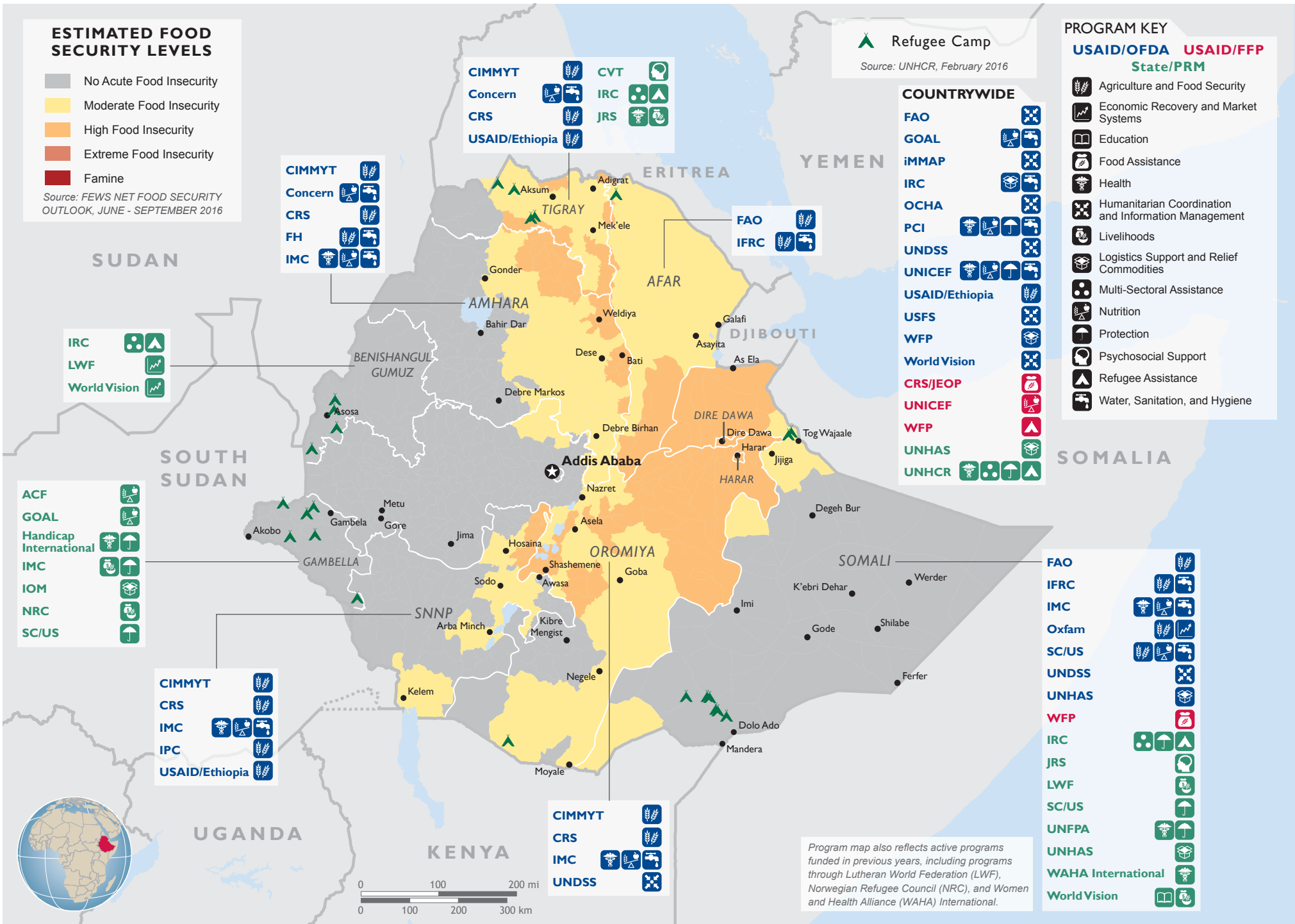
## PROGRAM KEY

**USAID/OFDA** **USAID/FFP**  
State/PRM

-  Agriculture and Food Security
-  Economic Recovery and Market Systems
-  Education
-  Food Assistance
-  Health
-  Humanitarian Coordination and Information Management
-  Livelihoods
-  Logistics Support and Relief Commodities
-  Multi-Sectoral Assistance
-  Nutrition
-  Protection
-  Psychosocial Support
-  Refugee Assistance
-  Water, Sanitation, and Hygiene

## COUNTRYWIDE

- FAO**
- GOAL**
- iMAP**
- IRC**
- OCHA**
- PCI**
- UNDSS**
- UNICEF**
- USAID/Ethiopia**
- USFS**
- WFP**
- World Vision**
- CRS/IEOP**
- UNICEF**
- WFP**
- UNHAS**
- UNHCR**



- ACF**
- GOAL**
- Handicap International**
- IMC**
- IOM**
- NRC**
- SC/US**

- FAO**
- IFRC**
- IMC**
- Oxfam**
- SC/US**
- UNDSS**
- UNHAS**
- WFP**
- IRC**
- JRS**
- LWF**
- SC/US**
- UNFPA**
- UNHAS**
- WAHA International**
- World Vision**

Program map also reflects active programs funded in previous years, including programs through Lutheran World Federation (LWF), Norwegian Refugee Council (NRC), and Women and Health Alliance (WAHA) International.

