



Last Updated 02/09/18

### SOUTH SUDAN-WIDE

AAH/USA		UNHAS	
ACTED		UNICEF	
FAO		WFP	
IMMAP		World Vision	
IOM*		UNICEF	
IRC		WFP	
NRC		ICRC	
OCHA		UNHAS	
SC/US		UNHCR	

Concern		UNICEF	
DRC		VSF/G	
IOM		WRI	
IRC		Africa Humanitarian Action	
Medair		Internews	
Mercy Corps		IRC	
Nonviolent Peaceforce		LWR	
Samaritan's Purse			

### SUDAN

Sudan  
~770,100  
(Includes unconfirmed  
refugee and nomadic  
populations.)

ARC	
Food for the Hungry	
IMA World Health	
IMC	
IOM	
Medair	
Relief International	
VSF/G	
WRI	
World Vision	
WFP	
ACTED	
IMC	
LWR	
Medair	
MENTOR Initiative	
Relief International	
SC	

### ESTIMATED FOOD SECURITY LEVELS THROUGH MARCH 2018

- No Data
- None or Minimal
- Stressed
- Crisis
- Emergency
- Catastrophe/Famine

Source: Integrated Food Security Phase Classification, September 2017

- # IDPs by State
- # Refugees
- # Other Displaced Persons

Concern	
Medair	
Samaritan's Purse	
UNICEF	

ACTED	
ALIMA	
IOM	

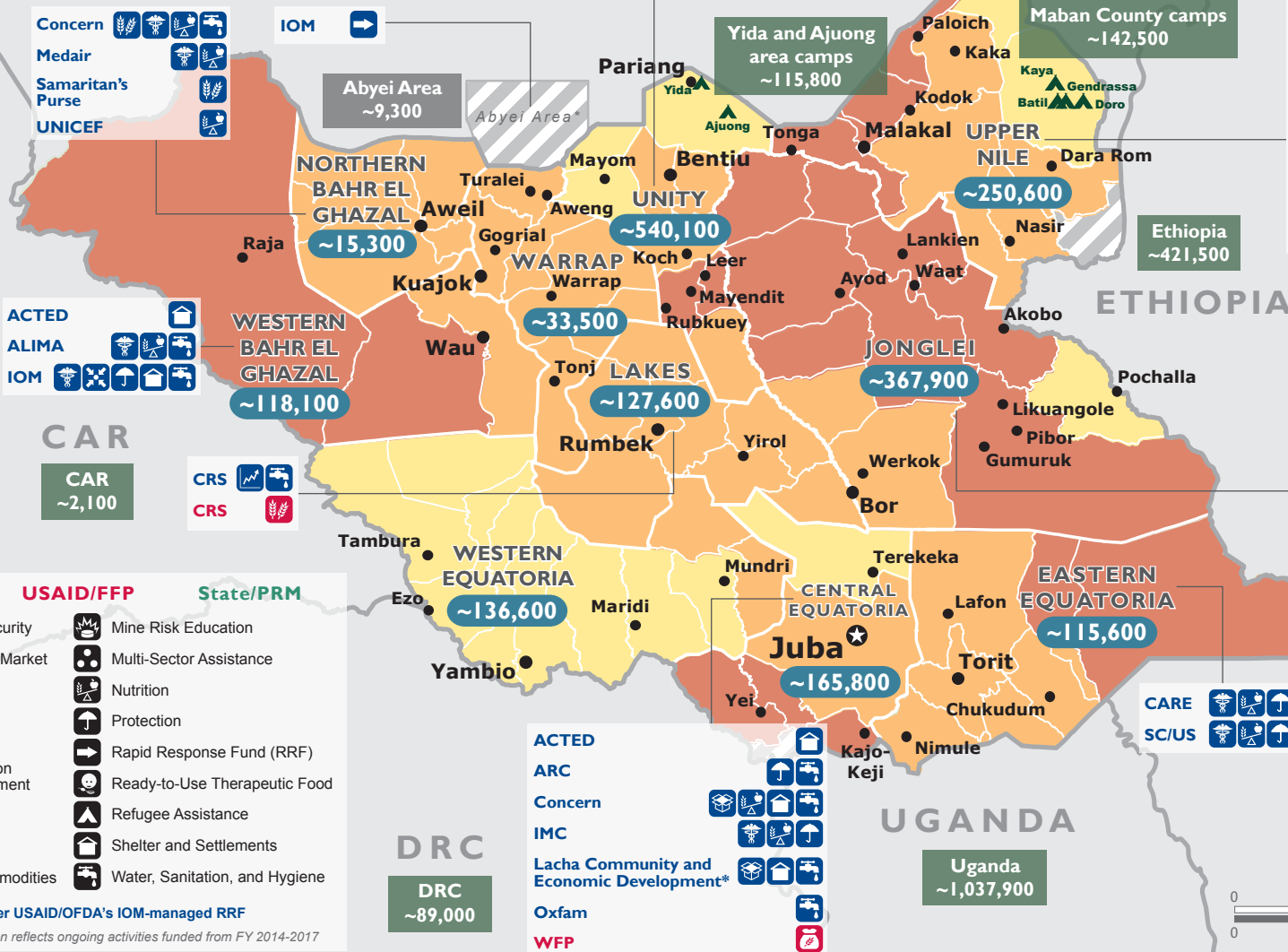
CAR  
~2,100

### PROGRAM KEY

USAID/OFDA	USAID/FFP	State/PRM
Agriculture and Food Security	Mine Risk Education	
Economic Recovery and Market Systems	Multi-Sector Assistance	
Food Assistance	Nutrition	
Health	Protection	
Humanitarian Coordination and Information Management	Rapid Response Fund (RRF)	
Humanitarian Air Service	Ready-to-Use Therapeutic Food	
Infrastructure	Refugee Assistance	
Logistics and Relief Commodities	Shelter and Settlements	
	Water, Sanitation, and Hygiene	

\* Sub-awards under USAID/OFDA's IOM-managed RRF

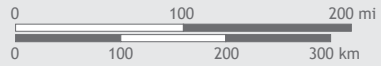
USAID/OFDA program information reflects ongoing activities funded from FY 2014-2017



ACTED	
CRS	
Food for the Hungry	
IMC	
IMA World Health	
Nonviolent Peaceforce	
Tearfund	
VSF/G	
WRI	
CRS	

CARE	
SC/US	

ACTED	
ARC	
Concern	
IMC	
Lacha Community and Economic Development*	
Oxfam	
WFP	



\* Final sovereignty status of Abyei Area pending negotiations between South Sudan and Sudan. IPC information unavailable for Abyei Area.