

ALBANIA

July 2018

Subregion	Southern Europe		
Income group	Upper middle income		

PEOPLE

Population (millions) ¹	2.93	(2018)	2.93	(2030)
Urban ²	60%	(2018)	69%	(2030)
Rural ²	40%	(2018)	31%	(2030)
Population growth ¹ (annual)	0.1%	(2018)	-0.2%	(2030)
Human Development Index rank ³	75/188 High human development			
Languages ¹⁹	Albanian 98.8% (official - derived from Tosk dialect), Greek 0.5%, other 0.6%.			
Religion ¹⁹	Muslim 56.7%, Roman Catholic 10%, Orthodox 6.8%, atheist 2.5%, Bektashi (a Sufi order) 2.1%, other 5.7%, unspecified 16.2%			
Ethnic composition ¹⁹	Albanian 82.6%, Greek 0.9%, other 1% (including Vlach, Romani, Macedonian, Montenegrin, and Egyptian), unspecified 15.5% (2011 est.)			

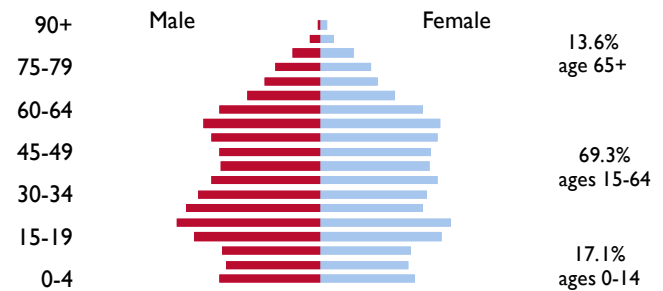
GOVERNMENT

Capital ¹⁹	Tirana		
Government type ¹⁹	Parliamentary republic		
Head of State ¹⁹	President of the Republic Ilir META (since 24 July 2017)		
Head of Govt ¹⁹	Prime Minister Edi RAMA (since 10 September 2013)		
Legislature ¹⁹	Unicameral Assembly or Kuvendi		
Females in Parliament ⁷	28%	(2017)	
Corruption Perceptions Index rank ⁵	91/180	(2017)	
Land area (sq km) ⁷	27,400	(The size of Maryland)	

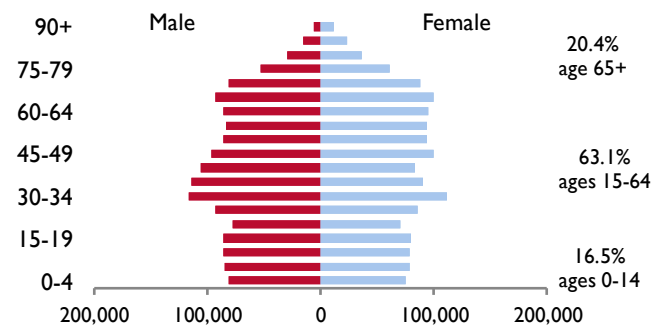
OFFICIAL DEVELOPMENT ASSISTANCE

From all donors (US\$ millions, net) ⁸	\$168.5	(2016)
as % of income ^{8,7}	1.36%	(2016)
per capita ^{8,18}	\$57.6	(2016)
From U.S. (US\$ millions) ⁸	\$17.5	(2016)

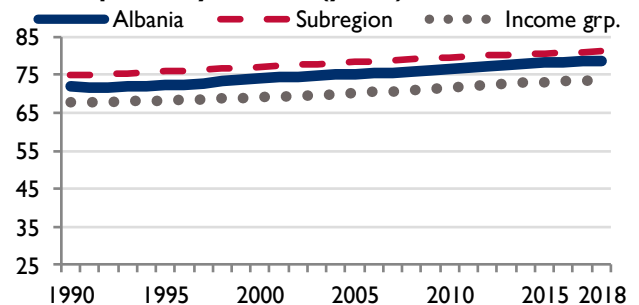
2018 population¹



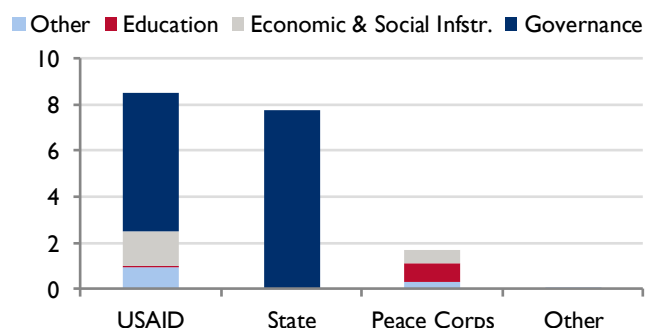
2030 population¹



Life expectancy at birth (years)¹



U.S. ODA by agency (US\$ millions, gross), 2016¹⁸



EDUCATION

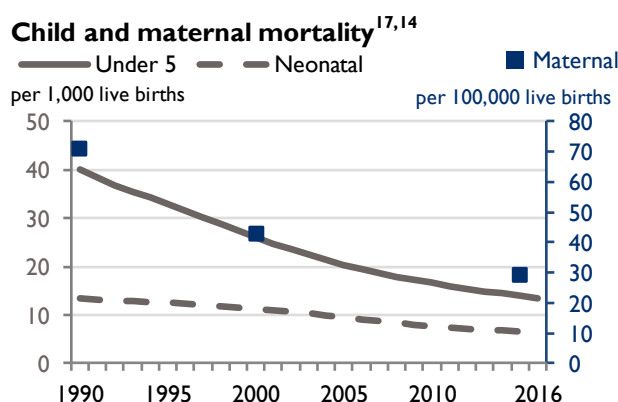
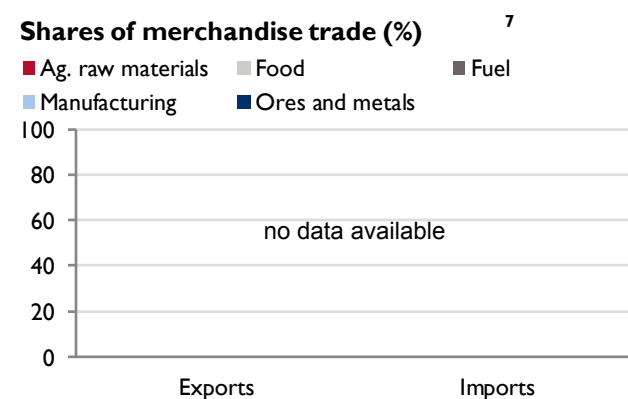
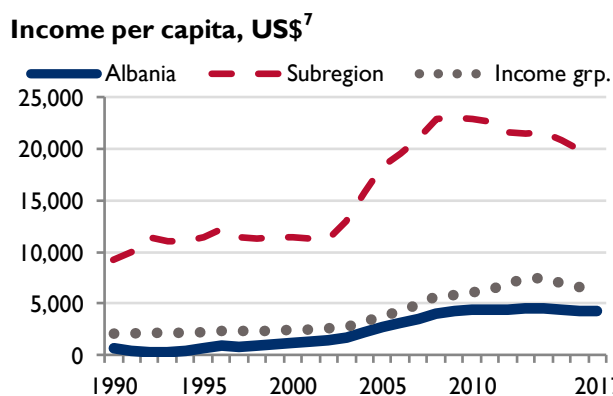
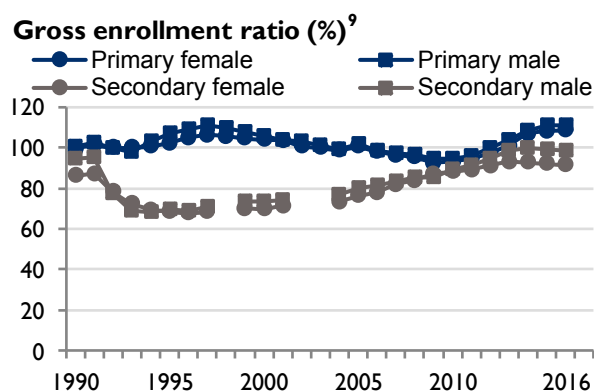
Completion rate, primary gross ⁷	105.6%	(2016)
Female completion rate ⁷	104.6%	(2016)
Male completion rate ⁷	106.5%	(2016)
Pupil-teacher ratio, primary ⁹	18	(2016)
Pupil-teacher ratio, secondary ⁹	12	(2016)
Public education expenditure (% of GDP) ⁹	3.5%	(2015)
Youth literacy rate (ages 15-24) ⁷	99%	(2012)
Children out of school, primary ⁷	7,101	(2016)
Of which, female ⁷	54%	(2016)
Of which, male ⁷	46%	(2016)

ECONOMY

GDP (US\$ millions) ⁷	\$13,039	(2017)
GDP growth (annual %) ⁷	3.8%	(2017)
10-year average ⁷	2.7%	(2017)
Merchandise exports (US\$ millions) ¹⁰	\$2,463	(2017)
Merchandise imports (US\$ millions) ¹⁰	\$5,670	(2017)
Percent of population living under \$1.90/day ⁷	1.1%	(2012)
Share of income held by the poorest 20% ⁷	9%	(2012)
Share of income held by the richest 20% ⁷	38%	(2012)
Youth unemployment (ages 15-24) ⁷	30.0%	(2017)
Annual inflation (IMF projection) ¹²	2.5%	(2018)

HEALTH

Prevalence of HIV (ages 15-49) ¹³	0.1%	(2016)
Antiretroviral coverage (% of adults 15+ meeting WHO guidelines) ⁷	30%	(2016)
Incidence of TB (per 100,000 population) ¹¹	16	(2016)
Prevalence of stunting (% of children under 5) ¹⁵	19%	(2008)
DPT3 immunization rate (children aged one) ¹⁵	98%	(2008)
Fertility rate (children per woman) ¹⁵	1.6	(2008)
Modern contraceptive prevalence ¹⁵	48%	(2008)
Births attended by skilled health worker ¹⁵	99%	(2008)
At least basic water source (% of population) ⁴	91%	(2015)
Public health expenditure (% of GDP) ¹⁶	3%	(2015)



SOURCES: ¹UN, World Population Prospects; ²UN, World Urbanization Prospects; ³UNDP, Human Development Report; ⁴WHO UNICEF Joint Monitoring Programme for Water Supply and Sanitation; ⁵Transparency International, Corruption Perceptions Index and Bribe Payers Index; ⁶Mo Ibrahim Foundation, Index of African Governance; ⁷World Bank, World Development Indicators; ⁸OECD/DAC, Destination of Official Development Assistance and Official Aid - Disbursements (Table 2a); ⁹UNESCO Institute for Statistics (UIS) Database; ¹⁰IMF, Direction of Trade Statistics; ¹¹WHO, Global Tuberculosis Database; ¹²IMF, World Economic Outlook Database; ¹³UNAIDS, Epidemiological Estimates (EPI) Database; ¹⁴WHO, World Health Statistics; ¹⁵Demographic and Health Surveys, STATcompiler; ¹⁶WHO, Global Health Expenditure Database; ¹⁷UN Inter-agency Group for Child Mortality Estimation, Child Mortality Estimates; ¹⁸OECD/DAC, Creditor Reporting System (CRS++); ¹⁹CIA, World Factbook; World Bank, Country and Lending Groups.